



OVER THE INFLUENCE PRESENTS

CLEON PETERSON

LANDSCAPES

ONLINE VIEWING ROOM

CLEON PETERSON

LANDSCAPES

Cleon Peterson's chaotic and violent paintings showing clashing figures symbolize the struggle between power and submission in the fluctuating architecture of contemporary society. In his newest body of works, the artist has placed his figures into an expansive and sublime landscape, the compositions of which pay homage to German Romanticist master Caspar David Friedrich's *Wander above the Sea of Fog*. Standing alone in front of epic nature and identifying with the central figure, the audience's experience echoes with both the heroic excitement and the contemplative spirituality evoked by the sublime — humanity's self-reflection that struggles to transcend above the mundane.

OVER THE INFLUENCE

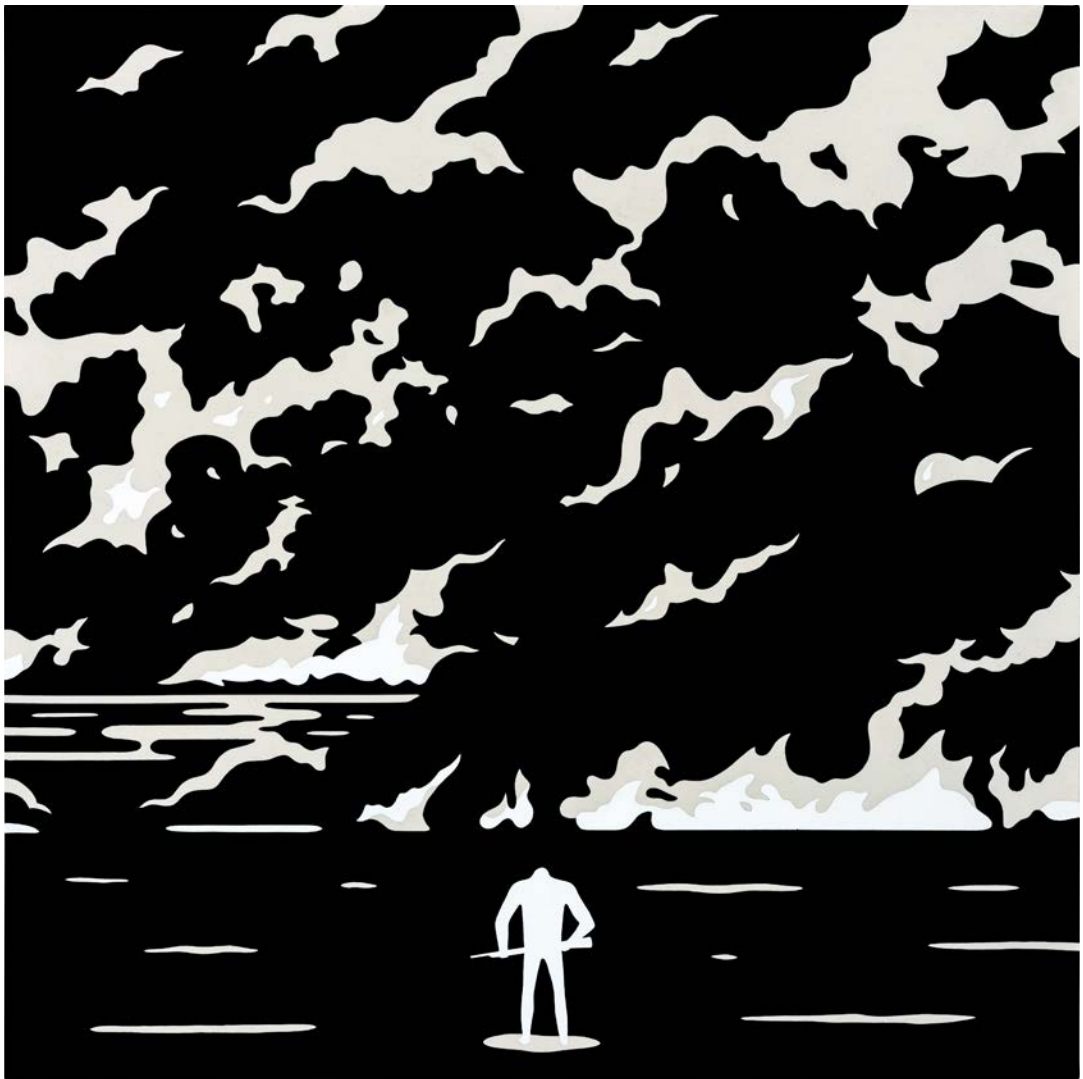
833 EAST 3RD STREET
LOS ANGELES, CA 90013

OVER THE INFLUENCE

WWW.OVERTHEINFLUENCE.COM

HONG KONG | LOS ANGELES





FIRE IN THE NIGHT, 2019

Acrylic on canvas
106.7 x 66 cm
42 x 26 in
(CP 20.012)



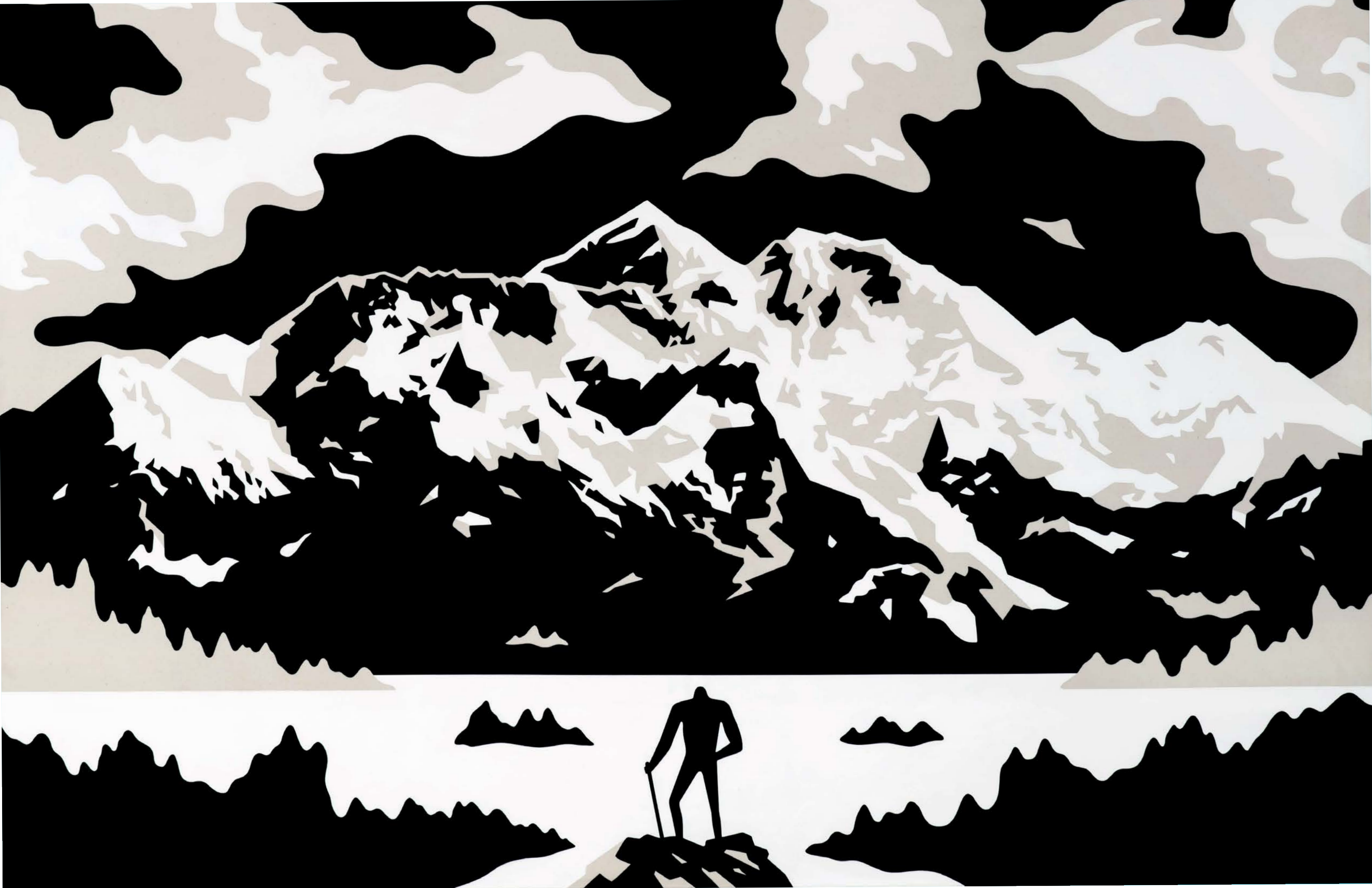




FIRST LIGHT, 2019

Acrylic on canvas
182.9 x 182.9 cm
72 x 72 in
(CP 20.004)







THE CONQUERED, 2019

Acrylic on canvas
152.4 x 152.4 cm
60 x 60 in
(CP 20.009)







THE CONQUEROR, 2019

Acrylic on canvas
152.4 x 152.4 cm
60 x 60 in
(CP 20.008)







THE EDGE OF NIGHT, 2019

Acrylic on canvas
182.9 x 182.9 cm
72 x 72 in
(CP 20.002)







EXILE, 2019

Acrylic on canvas
152.4 x 152.4 x 3.8 cm
60 x 60 x 1 1/2 in
(CP 19.036)







THE SUBLIME I, 2019

AAcrylic on canvas
182.9 x 182.9 x 3.8 cm
72 1/8 x 72 1/8 x 1 1/2 in
(CP 19.034)





ADDITIONAL WORKS



A PERFECT TRADE, 2019

Acrylic on canvas
106.7 x 66 cm
42 x 26 in
(CP 20.012)







BROKEN HANDS – LIGHT, 2018

Acrylic on canvas
61 x 45.7 cm
24 x 18 in
(CP 18.045)







HEATHENS - LIGHT, 2018

Acrylic on canvas
61 x 45.7 cm
24 x 18 in
(CP 18.051)





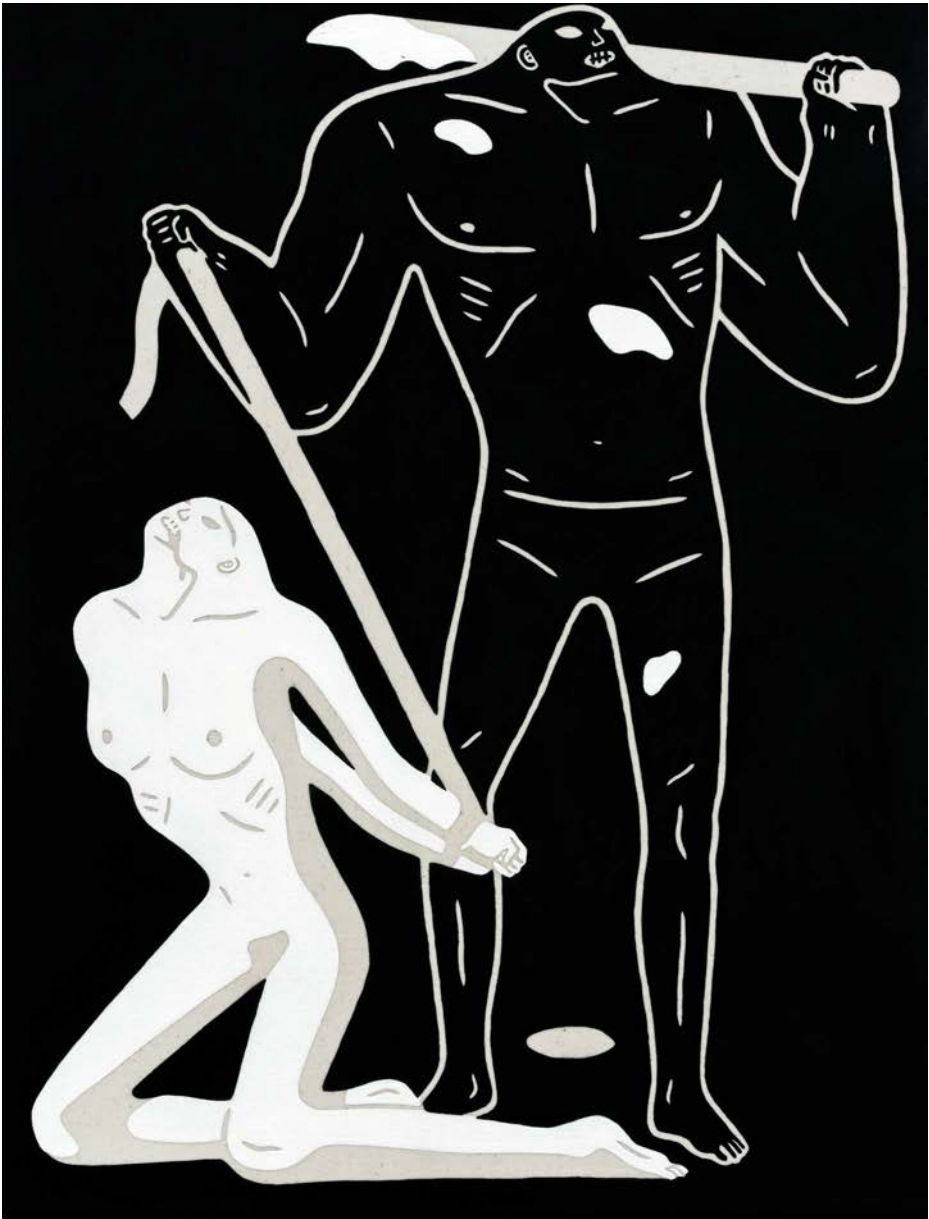


THE BLEEDERS, 2018

Acrylic on canvas
61 x 45.7 cm
24 x 18 in
(CP 18.056)







THE KEEPER, 2018

Acrylic on canvas
61 x 45.7 cm
24 x 18 in
(CP 18.058)







UNDERGROUND SERIES NO08, 2018

Acrylic on canvas
61 x 50.8 cm
24 x 20 in
(CP 19.012)







UNDERGROUND SERIES NO12, 2018

Acrylic on canvas
55.9 x 30.5 cm
22 x 12 in
(CP 19.014)





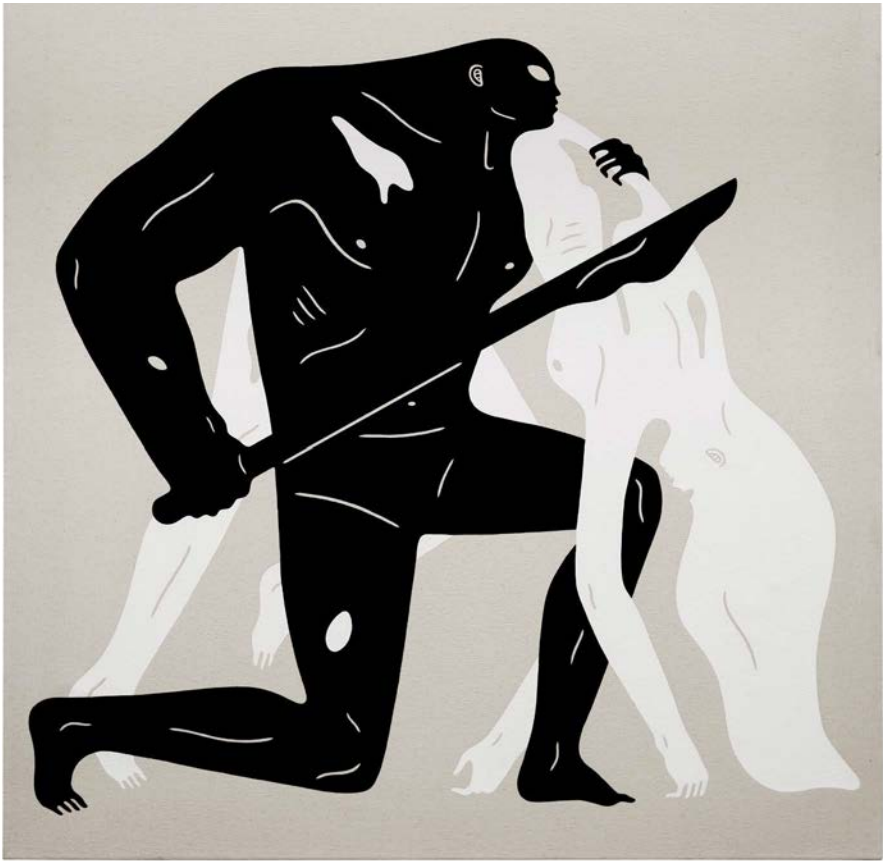


THE PERFECT SONG, 2018

Acrylic on canvas
121.9 x 91.4 cm
48 x 36 in
(CP 18.059)







MAN, 2017

Acrylic on canvas
101.6 x 101.6 x 3.2 cm
40 x 40 x 1 1/4 in
(CP 18.123)







UTOPIA II, 2018

Acrylic on canvas
101.6 x 157.5 cm
40 x 62 in
(CP 18.062)



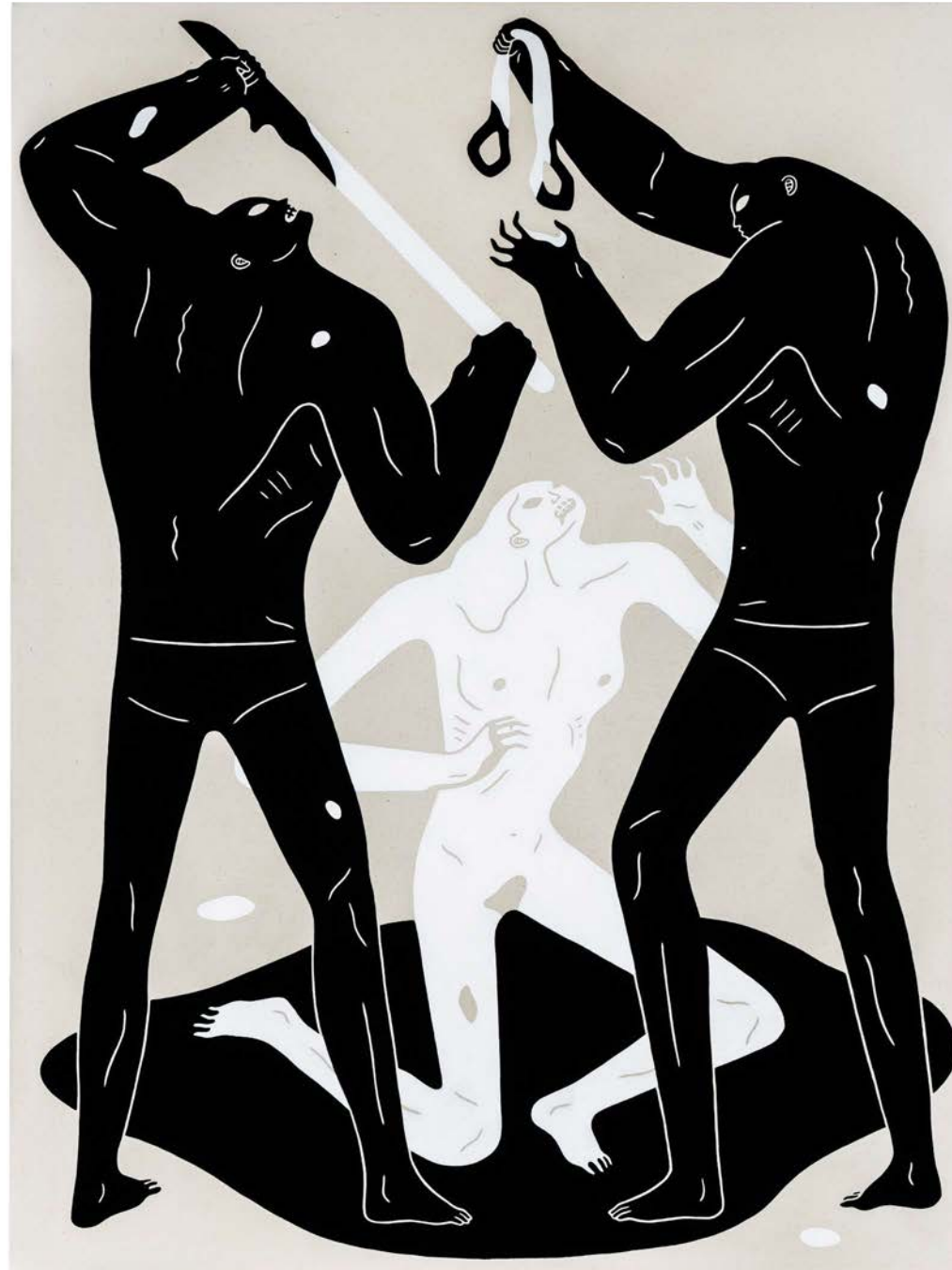


OVER THE INFLUENCE

WWW.OVERTHEINFLUENCE.COM

HONG KONG | LOS ANGELES

CLEON PETERSON



TO SWAY MINDS, 2017

Acrylic on canvas

163 x 122 cm

64 x 48 in

(CP 18.021)





BIO

CLEON PETERSON

B. 1973, SEATTLE, WASHINGTON, USA.

LIVES AND WORKS IN LOS ANGELES, CALIFORNIA, USA

Cleon Peterson's chaotic and violent paintings show clashing figures symbolizing a struggle between power and submission in the fluctuating architecture of contemporary society. Peterson's work acknowledges the demons within us and sheds light on the inherent violence of civilization. His allegorical works contrast good with evil, and violence with victim, in the tradition of Greco-Roman gladiator-motif vases, Francisco Goya's "The Disasters of War (1810-1820)," and Eugene Delacroix's "The Rape of Sabine Women (1850)."

Born in Seattle, Washington in Cleon in 1973, Peterson received his MFA from the Cranbrook Academy of Art in Detroit, Michigan and BFA in Graphic Design at Art Center College of Design in Pasadena. He currently lives and works in Los Angeles, California.

Peterson's solo exhibition at the Museum of Contemporary Art Denver in 2018, titled Cleon Peterson: Shadow of Men, showcased the artist's aesthetic mastery, long under-recognized by the museum field. This solo presentation also demonstrated the importance of representing violence to highlight a disturbing though fundamental element of society. Peterson's work is in a number of notable private collections worldwide.

OVER THE INFLUENCE

WWW.OVERTHEINFLUENCE.COM

HONG KONG | LOS ANGELES



SELECTED GROUP AND SOLO EXHIBITIONS CLEON PETERSON

SOLO EXHIBITIONS

2019

'Stare Into The Sun,' Pilevneli, Istanbul, TUR

2018

Blood & Soil, Over the Influence, Los Angeles, CA, USA

Shadow of Men, Museum of Contemporary Art Denver, Denver, CO, USA

2017

Victory, Galerie Du Jour, Paris, FRA

2016

The Judgement, Plus One, Antwerp, BEL

Purity, Over the Influence, HKG

2015

Poison, Library Street Collective, Detroit, USA

2014

End of Days, New Image Art Gallery, Santa Monica, CA, USA

2013

There is a War, The Outsiders, London, UK

2011

White Flag, Joshua Liner Gallery, New York, NY, USA

2010

Daybreak, New Image Art, Los Angeles, CA, USA

2009

New Image Art, Los Angeles, CA, USA

The Unconsoled, A.L.I.C.E. Gallery, Brussels, BEL

The Mirror Stage, Monster Children Gallery, Sydney, AUS

The Occupation, New Image Art, Los Angeles, CA, USA

2008

Kill Pixie and Cleon Peterson at White Walls Gallery, San Francisco, CA, USA

GROUP EXHIBITIONS

2018-19

All The Rage, Urban Art Exhibition, Taipei City, TWN

2017

Lock Route, Gillman Barracks, SGP

2014

Lasco Project, Palais de Tokyo, Paris, FRA

2013

Direct Address — An Inaugural Group Exhibition, Joshua Liner Gallery, New York, NY, USA

2012

These Friends Three, THIS Gallery, Los Angeles, CA, USA

Summer Group Exhibition, Joshua Liner Gallery, New York, NY, USA

2011

Postermat, The Hole, New York, NY, USA

New Image Art Miami, Scope, Miami, FL, USA

Pure Logo, New Image Art, Los Angeles, CA, USA

This Place in Time at Show & Tell, Toronto, CAN

Public Domaine, La Gaîté Lyrique, Paris, France, USA

